

NATIONAL
HEALTH CARE
for the
HOMELESS
COUNCIL

WELCOME

June 15, 2015

We will begin promptly at 1 p.m. Eastern

NATIONAL
HEALTH CARE
for the
HOMELESS
COUNCIL

This publication was supported by Grant/Cooperative Agreement Number U30CS09746-04-00 from the Health Resources and Services Administration, Bureau of Primary Health Care (HRSA/BPHC). Its contents are solely the responsibility of the authors and do not necessarily represent the official views of HRSA/BPHC.

NATIONAL
HEALTH CARE
for the
HOMELESS
COUNCIL

ADAPTING YOUR PRACTICE

Anticipatory Guidance for
Infants and Toddlers
Experiencing Homelessness

NATIONAL
HEALTH CARE
for the
HOMELESS
COUNCIL

June 15, 2015

PRESENTERS

Dana Basara, MSN
Dean of Nursing and Allied Health
Grantham University, Shawnee, KS



Lynda Bascelli, MD
Medical Director
Project Hope, Inc., Camden, NJ



AGENDA

- Introduction
- Challenges & effects of homelessness
- Key recommendations
- Examples
- Discussion

HCH Clinicians' Network

- Brings together clinicians of all disciplines serving people experiencing homelessness
- Identifies priorities in homeless health care field and develops resources to address
- Provides publications, training, peer support
- **Free to join: nhchc.org**



2014-15 Clinicians' Network Steering Committee

ADAPTED ANTICIPATORY GUIDANCE

- Advisory Committee launched by Clinicians' Network Steering Committee
 - Representatives from various disciplines (medicine, nursing, social work) and locations
- Reviewed American Academy of Pediatrics' *Bright Futures* anticipatory guidance and recommended adaptations for condition of homelessness
 - 2015 publication: infants and toddlers
 - 2016 publication: school age and adolescents

ADAPTED ANTICIPATORY GUIDANCE



- Part of *Adapting Your Practice* series of recommendations for homeless patients
 - <https://www.nhchc.org/resources/clinical/adapt-ed-clinical-guidelines/>
- Full recommendations to be published June 2015 at nhchc.org

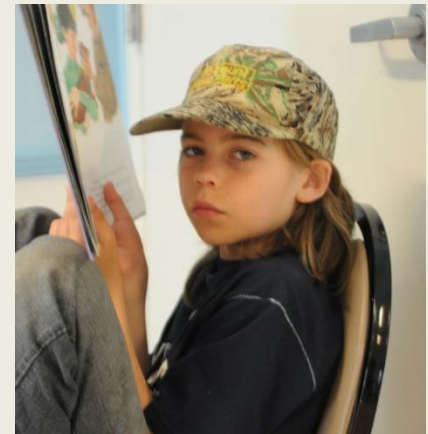
PREVALENCE OF CHILD HOMELESSNESS

- 2.5 million (1 in every 30) homeless children in America
 - Historic high
 - 8% increase nationally from 2012 to 2013



CAUSES OF CHILD HOMELESSNESS

- Poverty rate
- Lack of affordable housing
- Continuing impact of economic recession
- Racial disparities
- Challenges of single parenting
- Traumatic experiences



EXPERIENCES OF HOMELESS CHILDREN

- Become sick four times more often than housed children
- Three times more likely to have emotional and behavioral problems
- Four times more likely to show delayed development
- 83% exposed to at least one serious violent event by age twelve

CHILDHOOD TRAUMA

Young children may exhibit:

- Increased fear and anxiety
- Difficulty leaving caregivers
- Regression to an earlier developmental stage
- Sleep and eating disturbances

ADAPTED ANTICIPATORY GUIDANCE GOALS

- Family oriented
- Trauma informed
- Provide parenting support
- Connect with resources



KEY RECOMMENDATIONS: NEWBORN

- Share local resources for obtaining necessities
 - Housing
 - Newborn clothing and essentials
 - Parent hotline
- Emphasize bonding with baby, holding closely, and speaking gently
- Discuss crying and ways of coping



KEY RECOMMENDATIONS: INFANT

- Discuss finding safe physical spaces for the child to explore
 - Place to sit up, crawl, cruise, walk
- Encourage talking to the child
- Discuss safe sleeping arrangements
- Emphasize safety as child gains mobility

KEY RECOMMENDATIONS: TODDLER

- Encourage five minutes of play with child each day
 - Teaching simple songs
 - Getting on the child's level
 - Conversing frequently; teaching words
- Emphasize finding caregivers you trust
- Discuss ways of providing consistency and comfort to the child



KEY RECOMMENDATIONS: PRESCHOOLER

- Emphasize importance of stability
- Encourage literacy and numeracy skills
 - Play with letters, words, and numbers with child
 - Expose child to books and age-appropriate toys
- Discuss options for physical activity
- Discuss exposure to second-hand smoke, if applicable

OTHER RESOURCES

Visit nhchc.org/resources/clinical/tools-and-support/children-youth/ for

- Child Exposure to Trauma: Comparing Effectiveness of Interventions Addressing Maltreatment
- Designing Developmentally-Based Services for Young Homeless Families
- Pathways to Prevention: A Comprehensive Guide for Supporting Infant & Toddler Mental Health
- Operation CHOICES: Nutrition and Fitness Programming to Combat Obesity and Food Insecurity for Families in Shelters

JOIN OUR COMMITTEE

To join the Advisory Committee developing adapted anticipatory guidance for **school age children and adolescents** experiencing homelessness, email Lily Catalano,
lcatalano@nhchc.org

Committee will convene July 2015

QUESTIONS AND ANSWERS

Dana Basara, MSN
Dean of Nursing and Allied Health
Grantham University, Shawnee, KS



Lynda Bascelli, MD
Medical Director
Project Hope, Inc., Camden, NJ



CONTACT

Dana Basara, MSN
djbasara@aol.com

Lynda Bascelli, MD
bascellil@projecthopecamden.org

www.nhchc.org

Thank you for your participation.

Upon exiting you will be prompted to complete a short online survey.

Please take a minute to complete the survey to evaluate this webinar production.